



Tablet/Capsule Counter and Filler

CVC 1620-CS



The CVC 1620-CS Tablet/Capsule Counter and Filler is designed for high speed, highly accurate counting of tablets, capsules, and soft gels. The system has been upgraded with servo-driven flaps.

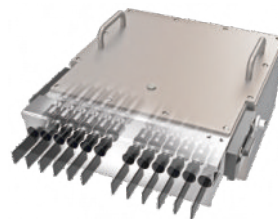
The servo-driven flap system adds to longevity of the assembly and reduce the requirement to replace pneumatically driven actuators.

STANDARD FEATURES

- 16 V-Shaped Channels per head, tool less change over
- Auto Dust Compensation
- Dual Dust Extraction Ports
- Powered Height Adjustment
- Track Full / Track Empty Sensors
- 2.83M-Motorized Sanitary Conveyor
- Single or Double Bottle Discharge
- Rejection System
- Memory capacity for up to 1000 jobs (*Requires Touch Screen controller)
- Stainless Steel Construction
- 21CFR Part 11 Compliant

FEATURE BENEFITS

- Independently controlled by servo motors
- Provide precise and absolute control
- High accuracy positioning and low-noise level
- Prolong life expectancy of drive unit
- Reduce the frequency for replacement



**SERVO-DRIVEN
FLAP ASSEMBLY**



CVC 1620-CS Technical Specifications

Max. Productivity	Up to 70 BPM with single insertion per head
Applicable Tablet/Capsule	Length: 1/8" to 1 1/8" (2mm - 30mm)
	Diameter: 1/8" to 3/4" (2mm - 20mm)
Bottle Size Range	Height: 1 3/4" to 7 7/8" (45mm to 200mm)
	Diameter: 1 1/8" to 4 3/4" (30mm - 120mm)
Hopper Capacity	42 L
Power Source	220 V, 50/60 Hz, 1 Phase
Power Consumption	1100 VA (4.8 Amp)
Air Pressure	Minimum 87 psi (6 bar) (ISO 8573-1)
Air Consumption Machine	3.6 CFM (100 NL/min.)
Dimensions (L x W x H)	2'-3" x 5'-8" x 6'-2" (680 x 1780 x 1870 mm)
Machine Weight	500 lbs (1102 kg)
Noise Level	≤ 80 dB

TECHNICAL SPECIFICATIONS

AVAILABLE OPTIONS

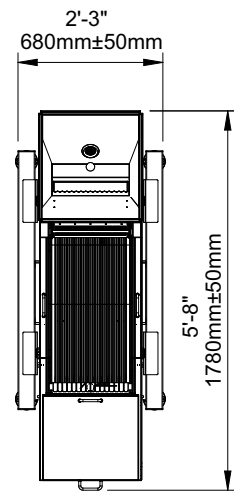
- Bottle nozzle
- Channel blocker
- Container upside down or fallen sensor
- Floor loaded pre-feeder with integrated controls
- Hopper level control system with tower lamp
- Industrial PC, Windows 10 (21CFR Part 11 Compliant)
- OPC UA Server
- Static eliminator bar
- Dual counting heads are available



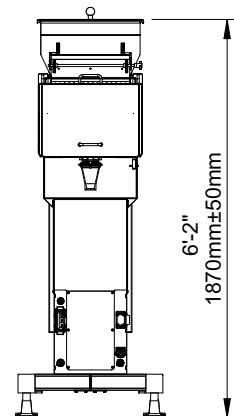
OPTIONAL: TABLET FEEDERS

MACHINE LAYOUTS

Top View



Front View



The dimensions shown are for standard machine. Optional conveyor can be provided based on selected options. This machine can run independently or be integrated into an automated packaging line. All CVC equipment is covered by a one-year parts warranty. Full warranty details are included in our equipment proposals.



CVC TECHNOLOGIES, INC.



Contact Us

USA

10861 Business Drive, Fontana, CA 92337
Phone: +1 (909) 355-0311
www.cvctechnologies.com
sales@cvcusa.com

USA East Coast Office

1855 New Highway, Suite C, Farmingdale NY 11735
sales@cvcusa.com

Taiwan-Asia Pacific Headquarters

Phone: +886 (4) 2496-3666
sales@cvctechnologies.com

China/India

sales@cvctechnologies.com